



**20**  
**AÑOS**

EN CONSTANTE **EVOLUCIÓN**



**ARGENTINA**

Debenedetti 3895  
(B1636ENU) Olivos - Buenos Aires  
Ph.: +54 11 4005.5540 | 5587  
[www.duralitte.com](http://www.duralitte.com)

**PLANTA CARDALES**

Parque Ind. Ruta 6  
Ruta Prov. 6 Km. 180  
(2814) Los Cardales  
Buenos Aires

**CENTRO DE SERVICIOS  
Y LOGÍSTICA NEUQUÉN**

Fiambalá 307  
(Q8304DIG) Neuquén  
Ph.: +54 299 525.9321



**USA HEADQUARTERS**

19315 Dickson Park Dr.  
Houston - Texas - TX 77373  
[www.duxaoil.com](http://www.duxaoil.com)

**WAREHOUSE**

1920 WW Thorne Dr.  
Houston - Texas - TX 77373  
Ph.: +1 832.515.5543

**MIDLAND TX WAREHOUSE**

7509 W. Industrial Ave. - Suite B1  
Midland | Texas | USA TX 79706  
Ph.: +1 832.203.9643



**USA HEADQUARTERS**

19315 Dickson Park Dr.  
Houston - Texas - TX 77373  
[www.duxatech.com](http://www.duxatech.com)

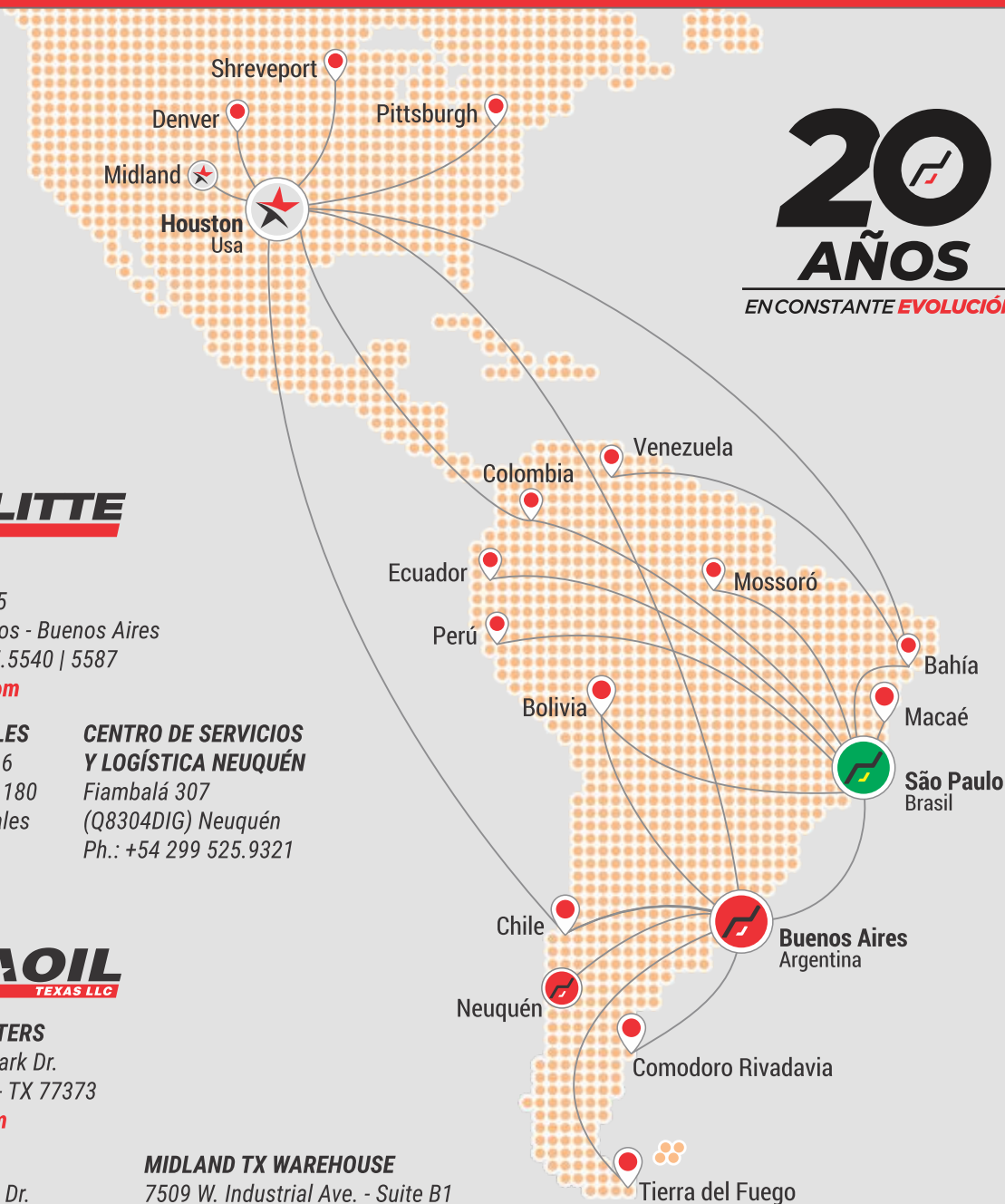
**WAREHOUSE**

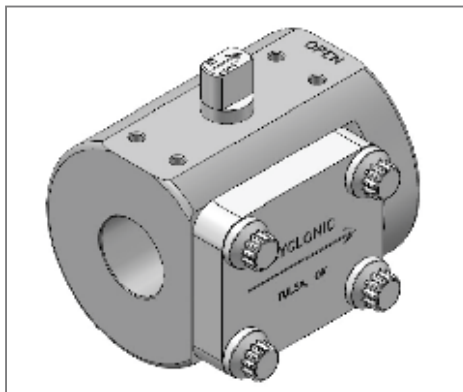
1920 WW Thorne Dr.  
Houston - Texas - TX 77373  
Ph.: +1 832.515.5543



**BRASIL**

Av. Doutor Augusto de Toledo 1572  
Cep: 09540-080 | Bairro Oswaldo Cruz  
São Caetano do Sul | São Paulo | Brasil  
[www.duralitte.com.br](http://www.duralitte.com.br)





## High Performance Control & Choke Valves

### STDC Series

Like all Cyclonic valves, the **STDC Series** is built with the Cyclonic Design Difference. When you need to control a wide range of pressures and flow rates of gases or liquids, Cyclonic's superior design gives you accurate control and a long safe valve life.

#### Actuation Friendly

Pre-drilled for simple in-line actuation changes, whether manual or automated.

#### Field Lubricated Stem

Can be used with manual handle or electric/pneumatic actuator.

#### Low Torque

Exclusive internal gear drive requires less torque, often allowing use of smaller, less expensive actuation. Precise repeatable control.

#### In-Line Flow Path

Minimizes pressure drop, erosion and cavitation.

#### Ds™ Erosion Detection System

Provides erosion monitoring capabilities.

#### Tungsten Carbide

Control discs and extended downstream erosion protection.

#### Side Entry Access Bonnet

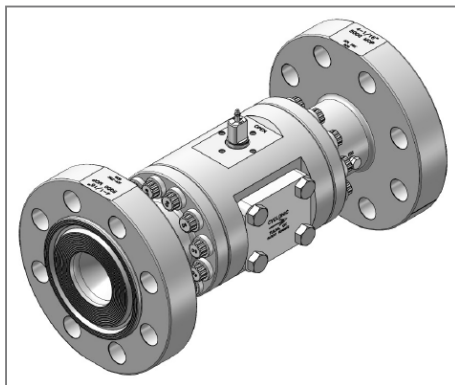
Allows easy changeout of the discs to accommodate changing flow conditions, and for complete inspection and maintenance - all without taking the valve out of line or removing the actuator.

#### 100% Testing

Each valve we make is tested to ANSI / API standards.



- Machined from solid bar stock
- Pressure rating up to 5,000psi MOP
- 1" to 2" NPT Threaded Connections
- Standard Xylan™ coated 17-4 stainless steel stem and disc driver
- Optional 17-4 HH1150 SS Stem & Driver, Per NACE MR0175
- Valve Body Available in API 4130-75K Carbon Steel or 316 Stainless Steel
- Multiple Orifice sizes up to 91/64s



## High Performance Control & Choke Valves

### SFDCL Series

Like all Cyclonic valves, the **SFDCL Series** is built with the Cyclonic Design Difference. When you need to control a wide range of pressures and flow rates of gases or liquids, Cyclonic's superior design gives you accurate control and a long safe valve life.

#### Actuation Friendly

Pre-drilled for simple in-line actuation changes, whether manual or automated.

#### Field Lubricated Stem

Can be used with manual handle or electric/pneumatic actuator.

#### Low Torque

Exclusive internal gear drive requires less torque, often allowing use of smaller, less expensive actuation. Precise repeatable control.

#### In-Line Flow Path

Minimizes pressure drop, erosion and cavitation.

#### EDS™ Erosion Detection System

Provides erosion monitoring capabilities.

#### Tungsten Carbide

Control discs and extended downstream erosion protection.

#### Side Entry Access Bonnet

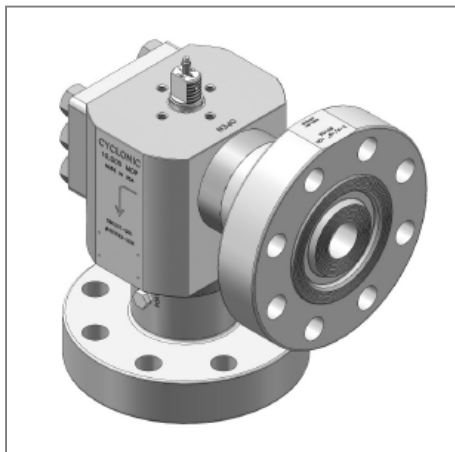
Allows easy changeout of the discs to accommodate changing flow conditions, and for complete inspection and maintenance - all without taking the valve out of line or removing the actuator.

#### 100% Testing

Each valve we make is tested to ANSI / API standards.

- Machined from solid bar stock
- Pressure rating up to 6,250psi MOP
- 2" to 4" Flange Sizes
- Standard Xylan™ coated 17-4 stainless steel stem and disc driver
- Optional 17-4 HH1150 SS Stem & Driver, Per NACE MR0175
- Valve Body Available in API 4130-75K Carbon Steel or 316 Stainless Steel
- Multiple Orifice sizes up to 91/64s





## High Performance Control & Choke Valves

### SFDEB Series

Like all Cyclonic valves, the **SFDEB Series** is built with the Cyclonic Design Difference. When you need to control a wide range of pressures and flow rates of gases or liquids, Cyclonic's superior design gives you accurate control and a long safe valve life.

#### Actuation Friendly

Pre-drilled for simple in-line actuation changes, whether manual or automated.

#### Field Lubricated Stem

Can be used with manual handle or electric/pneumatic actuator.

#### Low Torque

Direct drive design requires less torque, often allowing use of smaller, less expensive actuation. Precise repeatable control.

#### Angle-Body Design

Customizable A&B dimensions to match existing wellhead requirements.

#### EDS™ Erosion Detection System

Provides erosion monitoring capabilities.

#### Tungsten Carbide

Control discs and extended downstream erosion protection.

#### Side Entry Access Bonnet

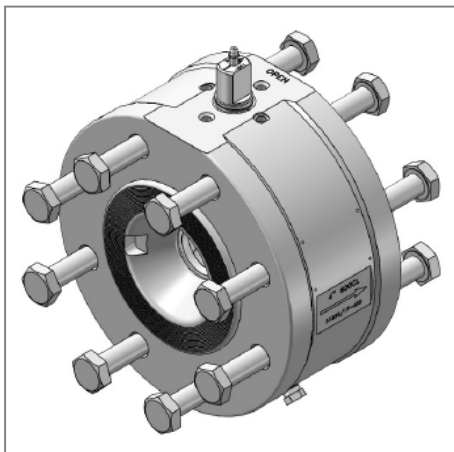
Allows easy changeout of the discs to accommodate changing flow conditions, and for complete inspection and maintenance - all without taking the valve out of line or removing the actuator.

#### 100% Testing

Each valve we make is tested to ANSI / API standards.



- Machined from solid bar stock
- Pressure rating up to 10,000psi MOP
- 1-13/16" to 4-1/16" Flange Sizes
- Standard Xylan™ coated 17-4 stainless steel stem and disc driver
- Optional 17-4 HH1150 & Duplex SS Stem & Driver, Per NACE MR0175
- Valve Body Available in API 4130-75K Carbon Steel or Duplex Stainless Steel
- Multiple Orifice sizes up to 91/64s



## High Performance Control & Choke Valves

### FDA Series

Like all Cyclonic valves, the **FDA Series** is built with the Cyclonic Design Difference. When you need to control a wide range of pressures and flow rates of gases or liquids, Cyclonic's superior design gives you accurate control and a long safe valve life.

#### Actuation Friendly

Pre-drilled for simple in-line actuation changes, whether manual or automated.

#### EDS™ Erosion Detection System

Provides erosion monitoring capabilities.

#### Field Lubricated Stem

Can be used with manual handle or electric/pneumatic actuator.

#### Tungsten Carbide

Control discs and extended downstream erosion protection.

#### Low Torque

Exclusive internal gear drive requires less torque, often allowing use of smaller, less expensive actuation. Precise repeatable control.

#### Short Pattern Design

Greater flexibility where space is limited.

#### 100% Testing

Each valve we make is tested to ANSI / API standards.



#### In-Line Flow Path

Minimizes pressure drop, erosion and cavitation.

- Machined from solid bar stock
- Pressure rating up to 6,250psi MOP
- 2" to 4" Flange Sizes
- Standard Xylan™ coated 17-4 stainless steel stem and disc driver
- Optional 17-4 HH1150 & Duplex SS Stem & Driver, Per NACE MR0175
- Valve Body Available in API 4130-75K Carbon Steel or 316 Stainless Steel
- Multiple Orifice sizes up to 144/64s



#### ARGENTINA

Debenedetti 3895  
(B1636ENU) Olivos - Buenos Aires  
Ph.: +54 11 4005.5540 | 5587  
[www.duralitte.com](http://www.duralitte.com)

#### PLANTA CARDALES

Parque Ind. Ruta 6  
Ruta Prov. 6 Km. 180  
(2814) Los Cardales  
Buenos Aires

#### CENTRO DE SERVICIOS Y LOGÍSTICA NEUQUÉN

Fiambalá 307  
(Q8304DIG) Neuquén  
Ph.: +54 299 525.9321



#### USA HEADQUARTERS

19315 Dickson Park Dr.  
Houston - Texas - TX 77373  
[www.duxaoil.com](http://www.duxaoil.com)

#### WAREHOUSE

1920 WW Thorne Dr.  
Houston - Texas - TX 77373  
Ph.: +1 832.515.5543

#### MIDLAND TX WAREHOUSE

7509 W. Industrial Ave. - Suite B1  
Midland - Texas - USA TX 79706  
Ph.: +1 832.203.9643



#### BRASIL

Av. Doutor Augusto de Toledo 1572  
Cep: 09540-080 - Bairro Oswaldo Cruz  
São Caetano do Sul - São Paulo - Brasil  
[www.duralitte.com.br](http://www.duralitte.com.br)



#### USA HEADQUARTERS

19315 Dickson Park Dr.  
Houston - Texas - TX 77373  
[www.duxatech.com](http://www.duxatech.com)

#### WAREHOUSE

1920 WW Thorne Dr.  
Houston - Texas - TX 77373  
Ph.: +1 832.515.5543

